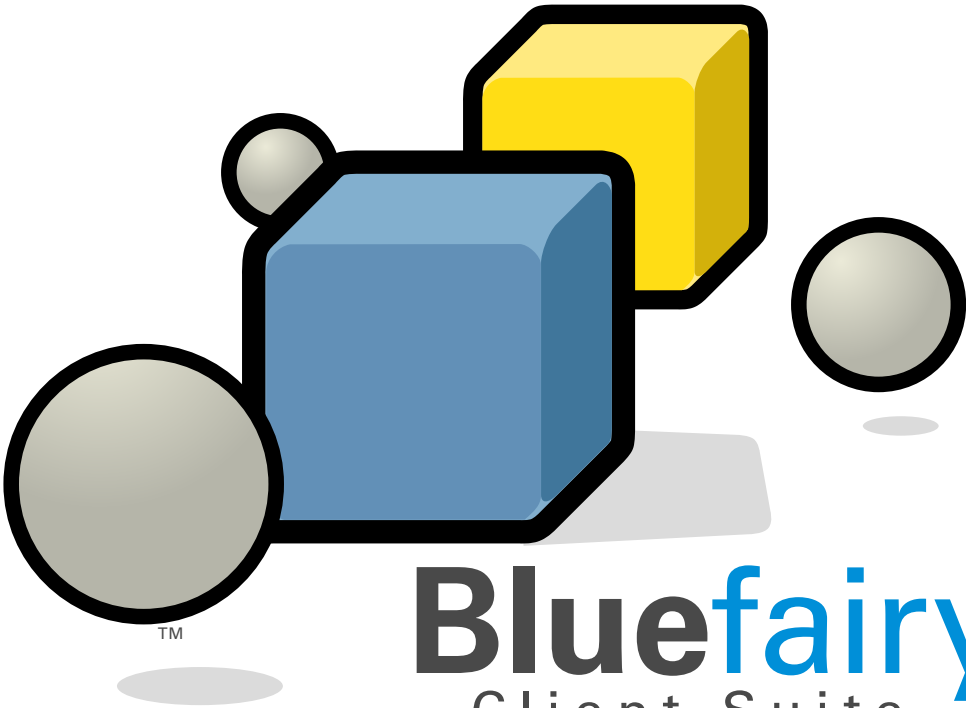


Locate to simplify



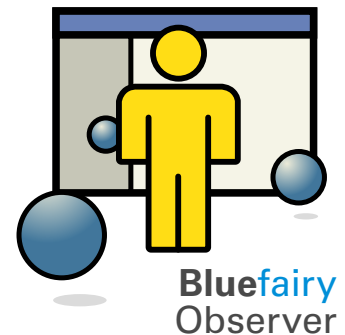
**Bluefairy**<sup>TM</sup>  
Client Suite  
Observer



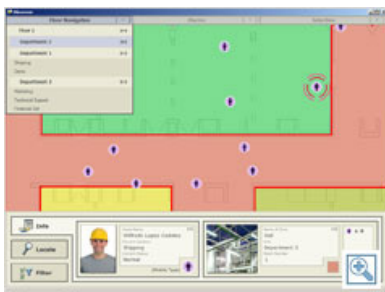
# Bluefairy Observer

**Bluefairy™** Observer displays the movements and current locations of people and assets, in real-time.

Various functionalities allow users to search for a specific person or asset, filter the display by type, as well as monitor tagged personnel and assets across multiple floors and buildings. **Bluefairy™** Observer is designed to fully take advantage of the highly granular positional data of the **nanoEdge™** Tracking System, accurately rendering the displacements of people and assets, as well as sensor-driven events and alarms. Its intuitive graphical representation facilitates the real-time observation of processes in any location-aware applications.



Thousands of people and assets can be displayed and tracked using **Bluefairy™** Observer. With the positional data being updated every second, users can monitor and obtain accurate information regarding the current location of any person or asset.



*Observer allows users to monitor the location of any tagged personnel or asset and provides instant visual feedback as to its status.*

**Bluefairy™** Observer's intuitive interface provides instant visual feedback of any events or alarms triggered by badge-wearing personnel or tagged assets. **Bluefairy™** Observer offers a wide range of tools to quickly find any badge-wearing personnel or tagged asset, easily filter the display, as well as rapidly obtaining information about any personnel, assets or zones. Furthermore, **Bluefairy™** Observer makes it easy to move from floors to floor in a multi-floor environment and obtain instant inventories on a per-zone basis. And because of the distributed architecture of the **Bluefairy™** Suite, multiple users can connect simultaneously and monitor personnel and assets, from anywhere and anytime.

### System Requirements

Operating System: Microsoft® Windows 7, XP® SP2 or Vista®  
Microsoft® Windows Server® 2003 or 2008

Processor: Intel® Pentium 4® 2.8GHz or greater

Memory: 512 MB RAM minimum

For more information, please contact us:

**Purelink Technology Inc.**

Tel.: 1-514-788-0088

Fax: 1-514-788-0080

info@purelink.ca

www.purelink.ca

157 St-Jacques street  
Lachine, Montreal, QC H8R 1E1  
Canada